

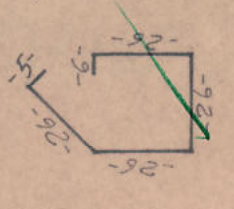
Hand-drawn technical drawing of a mechanical part, likely a bracket or support, with dimensions and calculations.

**Dimensions and Annotations:**

- Top View (Left):** Shows a rectangular base with a central rectangular cutout. The overall width is 100. The cutout width is 40. The distance from the left edge to the cutout is 30. The distance from the right edge to the cutout is 30. The cutout depth is 40. The base thickness is 10. The distance from the top edge to the cutout is 10. The distance from the bottom edge to the cutout is 10. The distance from the left edge to the cutout is 30. The distance from the right edge to the cutout is 30. The distance from the top edge to the cutout is 10. The distance from the bottom edge to the cutout is 10.
- Top View (Right):** Shows a rectangular base with a central rectangular cutout. The overall width is 100. The cutout width is 40. The distance from the left edge to the cutout is 30. The distance from the right edge to the cutout is 30. The cutout depth is 40. The base thickness is 10. The distance from the top edge to the cutout is 10. The distance from the bottom edge to the cutout is 10. The distance from the left edge to the cutout is 30. The distance from the right edge to the cutout is 30. The distance from the top edge to the cutout is 10. The distance from the bottom edge to the cutout is 10.
- Side View (Bottom):** Shows a rectangular base with a central rectangular cutout. The overall width is 100. The cutout width is 40. The distance from the left edge to the cutout is 30. The distance from the right edge to the cutout is 30. The cutout depth is 40. The base thickness is 10. The distance from the top edge to the cutout is 10. The distance from the bottom edge to the cutout is 10. The distance from the left edge to the cutout is 30. The distance from the right edge to the cutout is 30. The distance from the top edge to the cutout is 10. The distance from the bottom edge to the cutout is 10.

**Calculations:**

- Top View (Left):**
  - $100 - 40 = 60$
  - $60 \times 3 = 180$
  - $180 + 100 = 280$
- Top View (Right):**
  - $100 - 40 = 60$
  - $60 \times 3 = 180$
  - $180 + 100 = 280$
- Side View (Bottom):**
  - $100 - 40 = 60$
  - $60 \times 3 = 180$
  - $180 + 100 = 280$



35-

Stahl:  
Stahlliste Blatt Nr.:  
Schneideskizze Blatt Nr.:  
+ 0.0

In statischer Hinsicht gerüstet  
 Prüfnummer 92, das Prüfverzeichnisse 1973  
 Dortmund, 31. Dez. 1973  
 Prüfamt für Baustatik, 1. Prüfungsausschuss  
 (Tel. Nr. 5.470) für die Fachrichtung MASSIVBAU  
 DIPL.-ING. WALTER KECK  
 Dortmund - Brackel, Höfstr. 49  
 Tel. 25 73 60

Dr. Ing. N. Potthoff Beratender Ingenieur für Bauwesen 47 Hamm · Langewanneweg 116 · Tel. 50573	Blattgröße	Blatt Nr.
		3/2 A
	Datum: 12.10.73	